

General anatomy and terms

Figures taken from Burch (1989). North American Freshwater Snails. Malacological Publications. Hamburg, Michigan. viii + 365 pp.

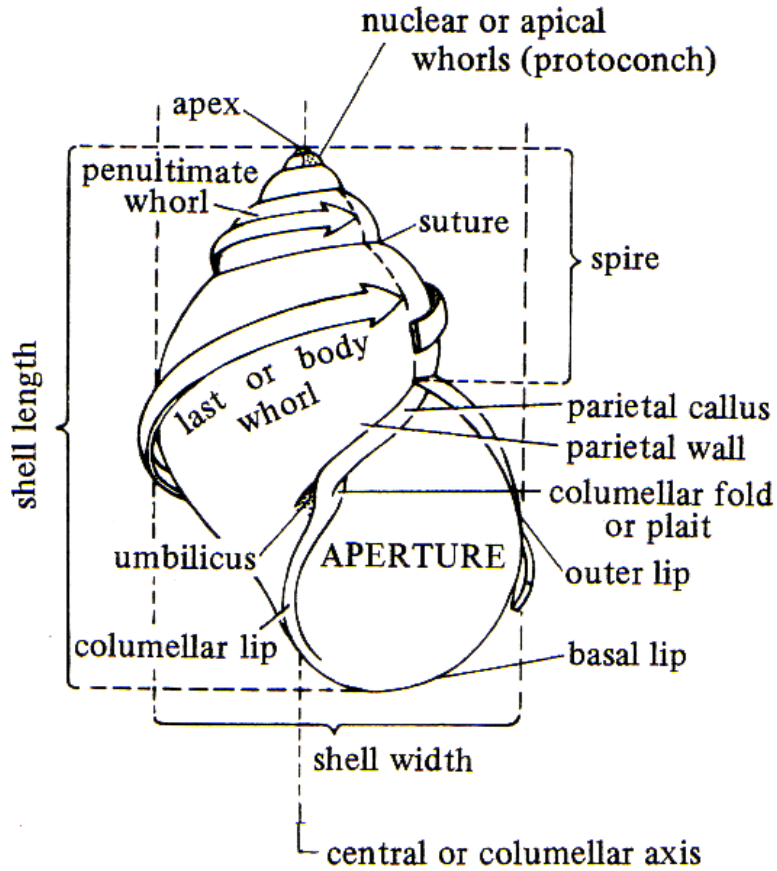


Figure 1. Generalized shell morphology.

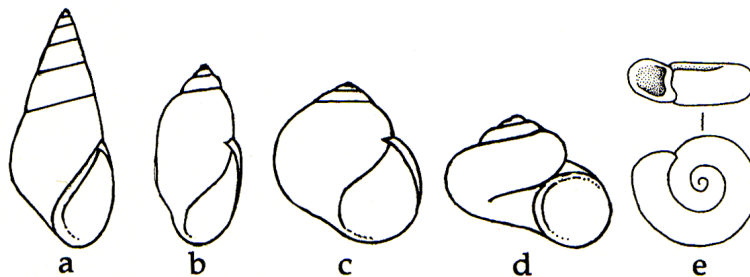


Figure 2. Shell Shapes. a) elongate conic, b) elongate cylindrical, c) globose, d) depressed, e) discoidal

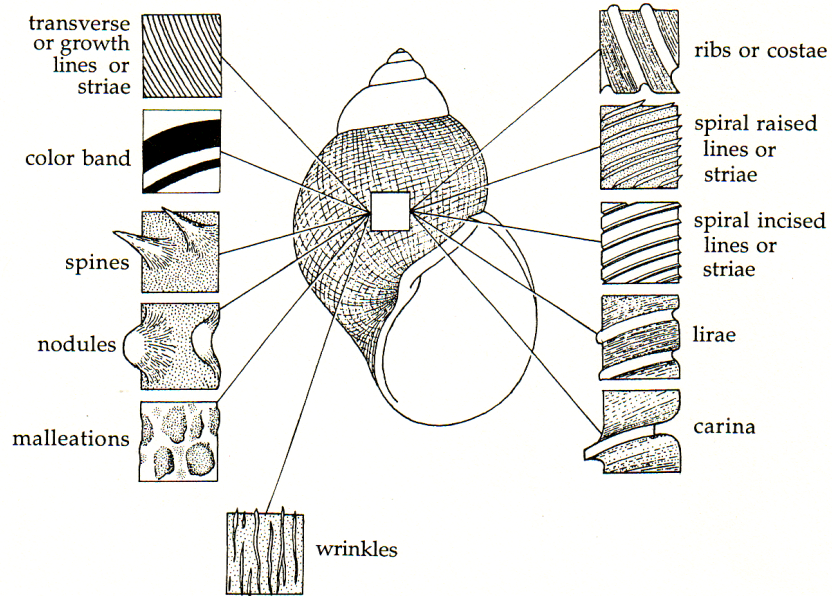


Figure 3. Shell sculpture.

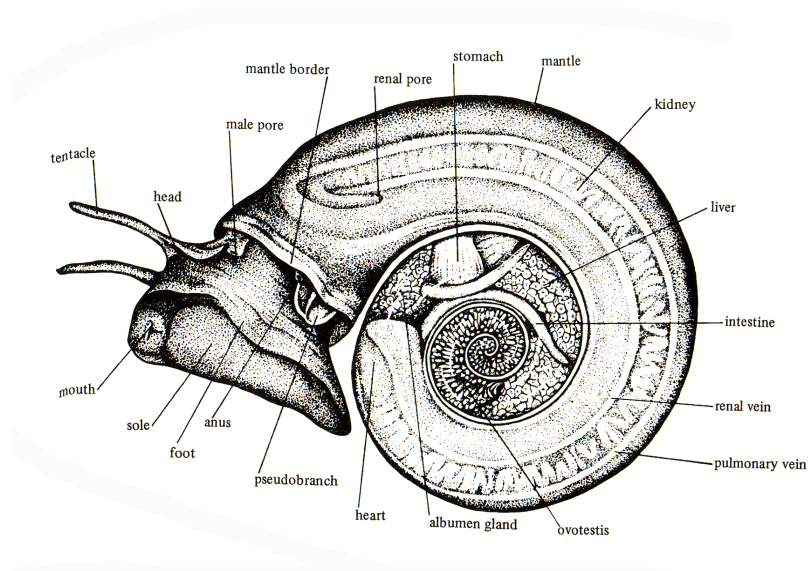


Figure 4. Gastropod (*Biomphalaria*) internal anatomy.

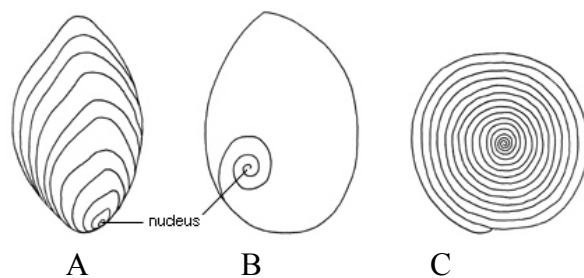


Figure 5. Operculum types, showing position of nucleus. A. terminal; B. paucispiral; C. spiral.